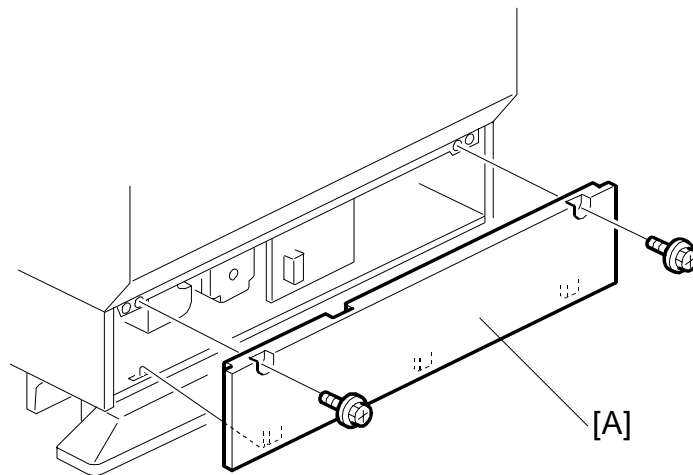


ONE-TRAY PAPER FEED UNIT
(Machine Code: G567)

1. REPLACEMENT AND ADJUSTMENT

1.1 COVER REPLACEMENT

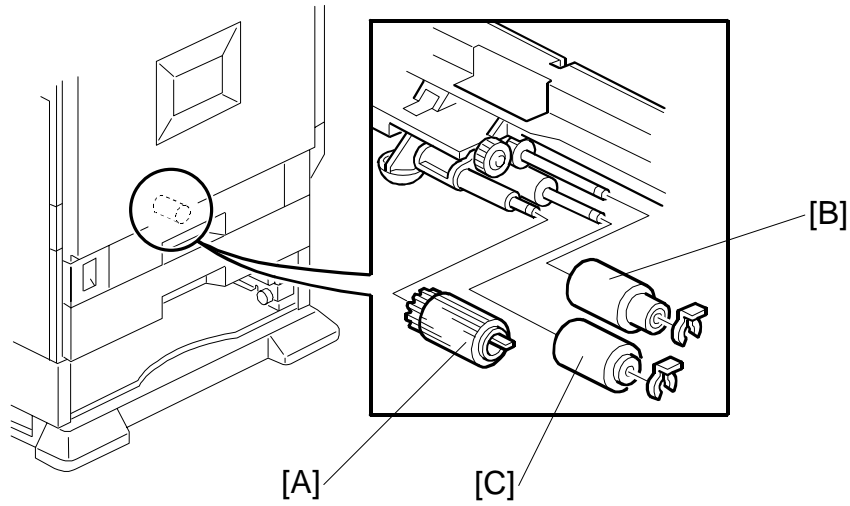


G567R102.WMF

1. Rear cover [A] (🔩 x 2)

1.2 ROLLER REPLACEMENT

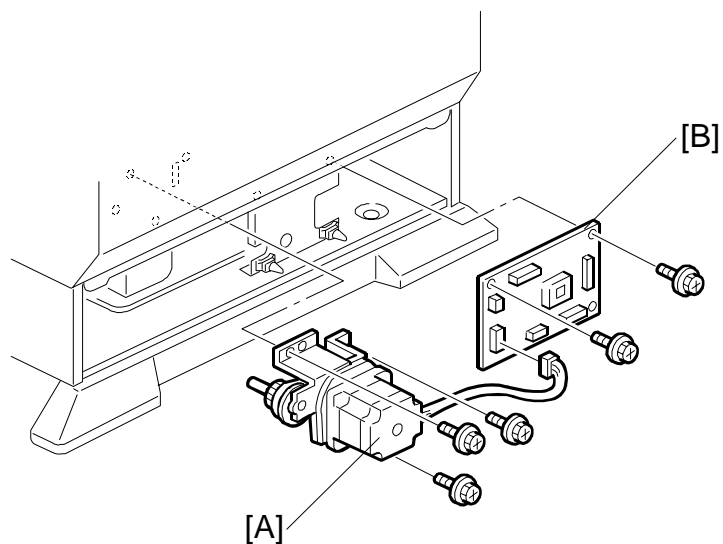
1.2.1 PAPER FEED, SEPARATION, AND PICK-UP ROLLERS



G567R101.WMF

1. Paper tray
2. Pick-up roller [A] (1 hook)
3. Paper Feed Roller [B] (☞ x 1)
4. Separation Roller [C] (☞ x 1)

1.3 PAPER FEED MOTOR AND MAIN BOARD

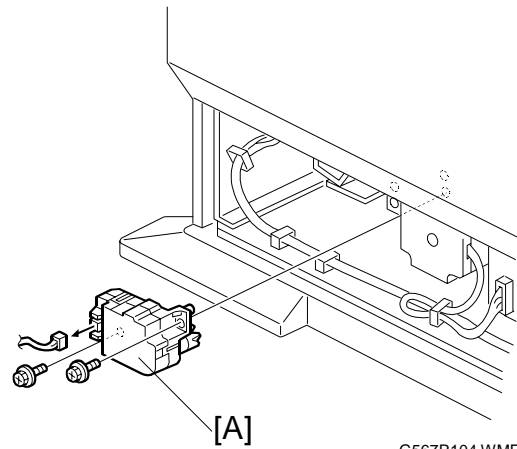


G567R103.WMF

1. Rear cover (☞ 1.1 COVER REPLACEMENT)
2. Paper feed motor [A] (☞ x 1, ☞ x 3)
3. Main board [B] (☞ x 2)

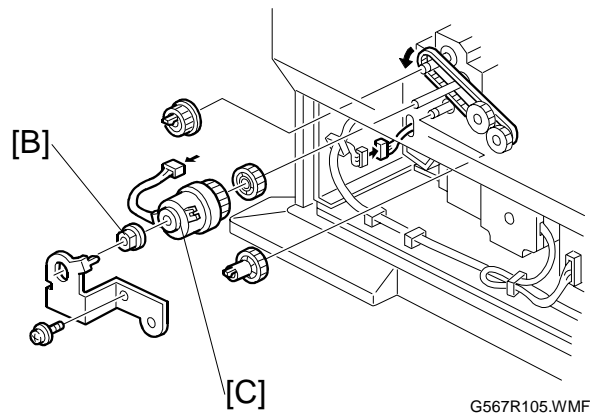
1.4 TRAY LIFT MOTOR

1. Rear cover (☛ 1.1 COVER REPLACEMENT)
2. Tray lift motor [A] (☛ x 1, ⚙ x 2)

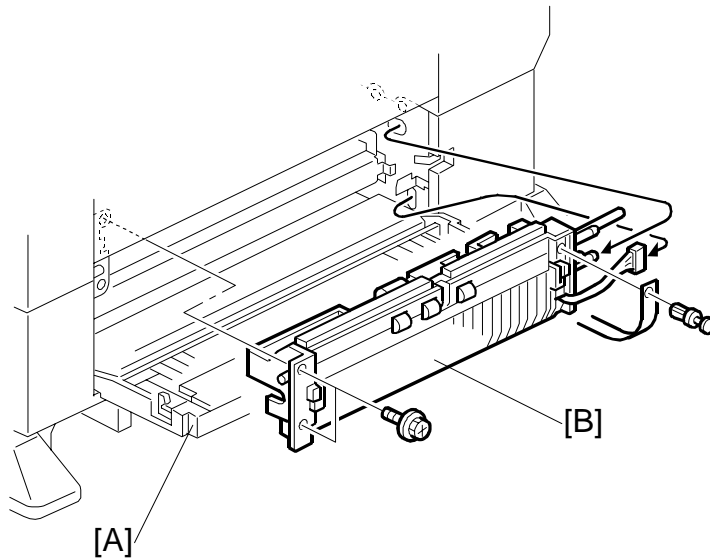


1.5 PAPER FEED CLUTCH

1. Rear cover (☛ 1.1 COVER REPLACEMENT)
2. Bracket [B] (⚙ x 1)
3. Bushing
4. Paper feed clutch [C]



1.6 PAPER FEED UNIT REPLACEMENT



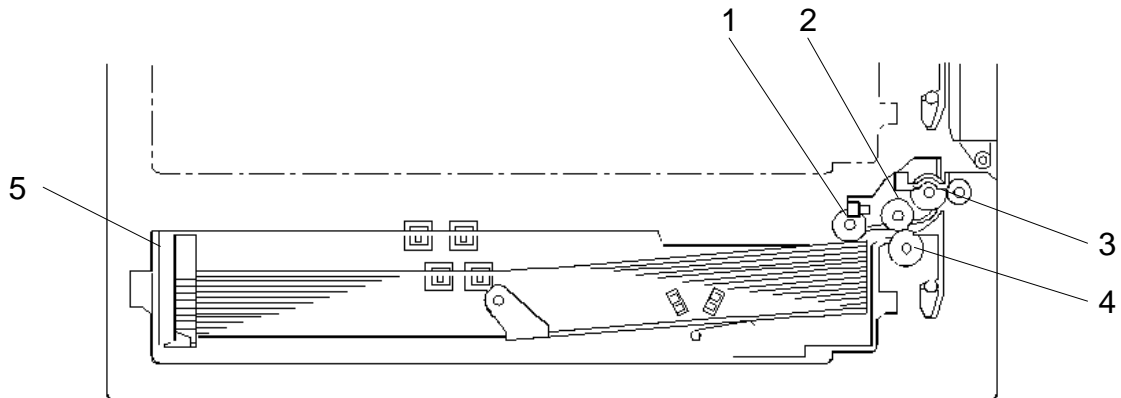
G567R106.WMF

1. Right cover [A]
2. Paper feed unit [B] (🔩 x 2, 🌀 x 1)

2. DETAILED DESCRIPTIONS

2.1 OVERVIEW

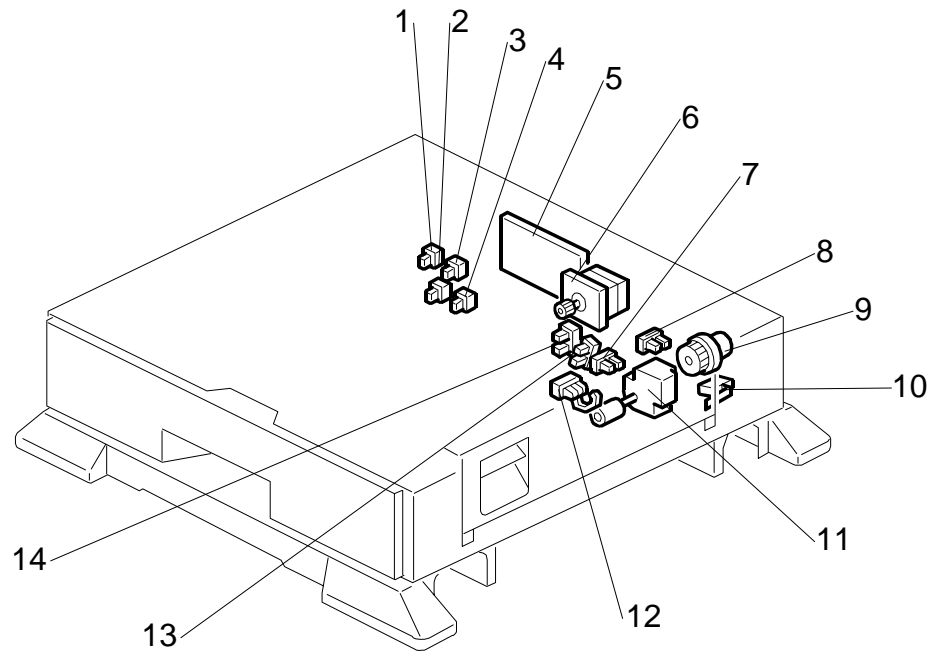
2.1.1 MECHANICAL COMPONENT LAYOUT



G567D001.WMF

1. Pick-up Roller
2. Paper Feed Roller
3. Relay Roller
4. Separation Roller
5. Tray

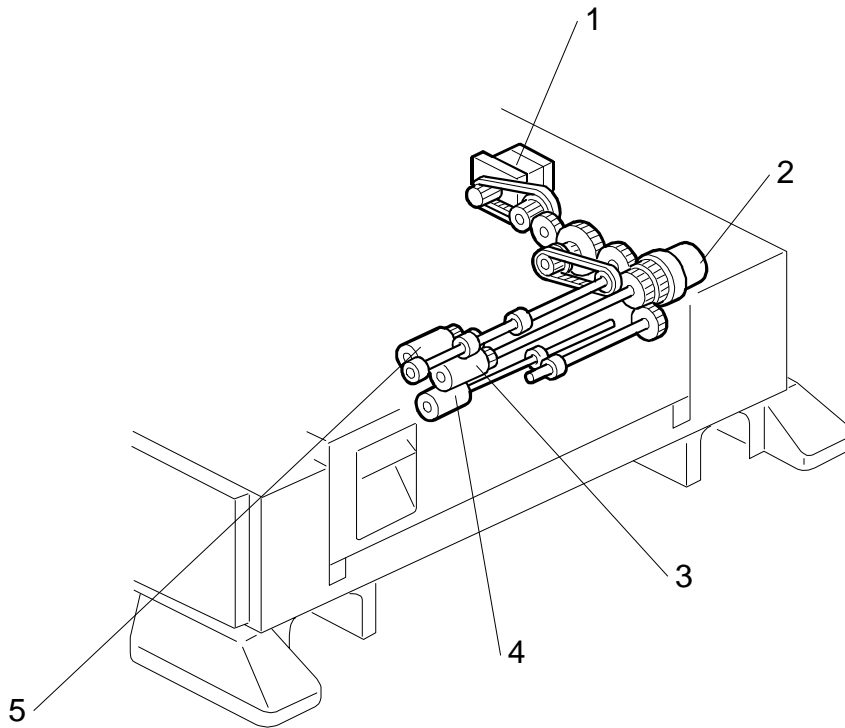
2.1.2 ELECTRICAL COMPONENT LAYOUT



G567D101.WMF

- | | |
|------------------------|---------------------------|
| 1. Paper Size Switch 1 | 8. Lift Sensor |
| 2. Paper Size Switch 2 | 9. Paper Feed Clutch |
| 3. Paper Size Switch 3 | 10. Vertical Guide Switch |
| 4. Paper Size Switch 4 | 11. Tray Lift Motor |
| 5. Main Board | 12. Relay Sensor |
| 6. Paper Feed Motor | 13. Paper Height 2 Sensor |
| 7. Paper End Sensor | 14. Paper Height 1 Sensor |

2.1.3 DRIVE LAYOUT

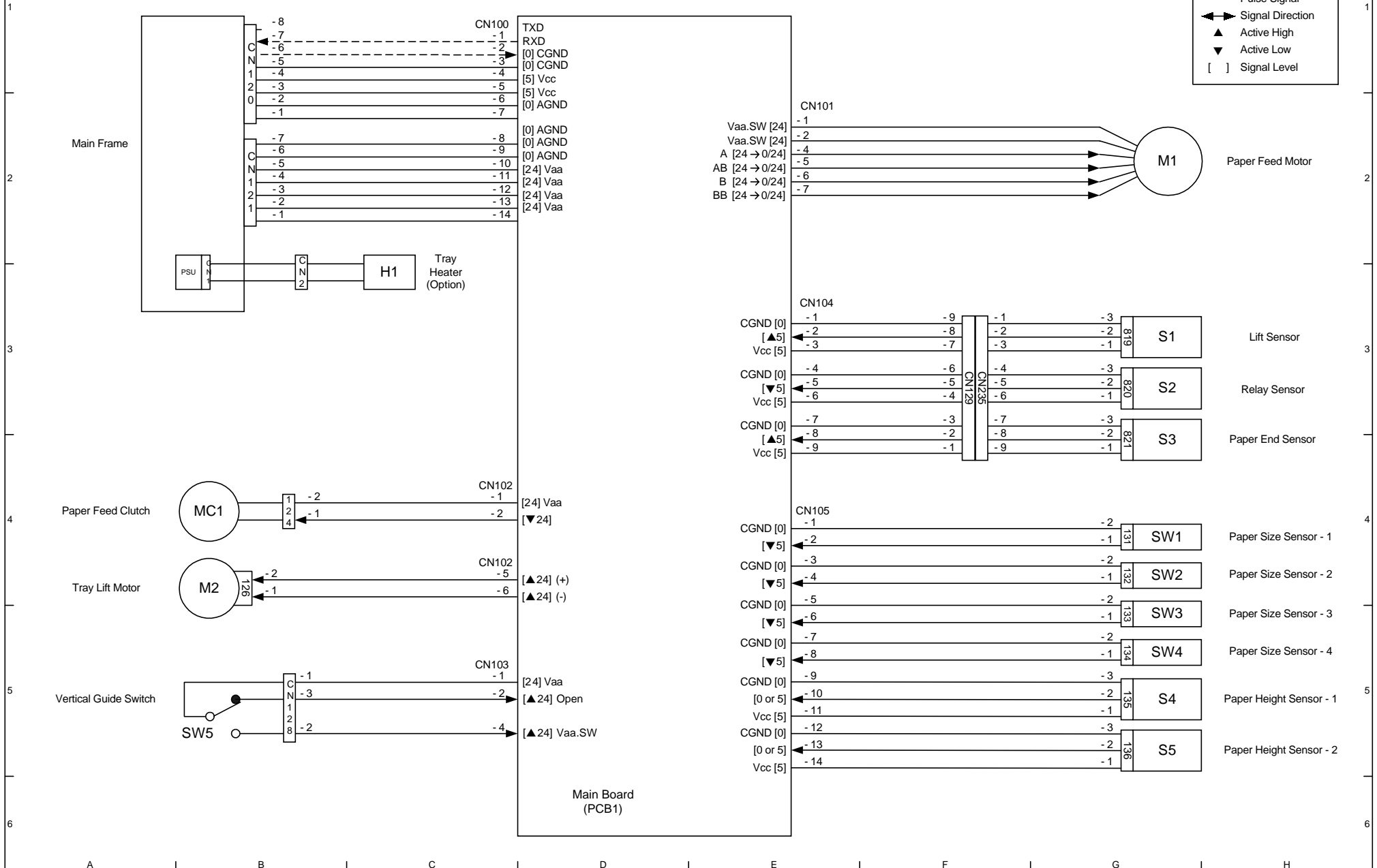
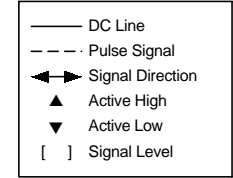


G567D102.WMF

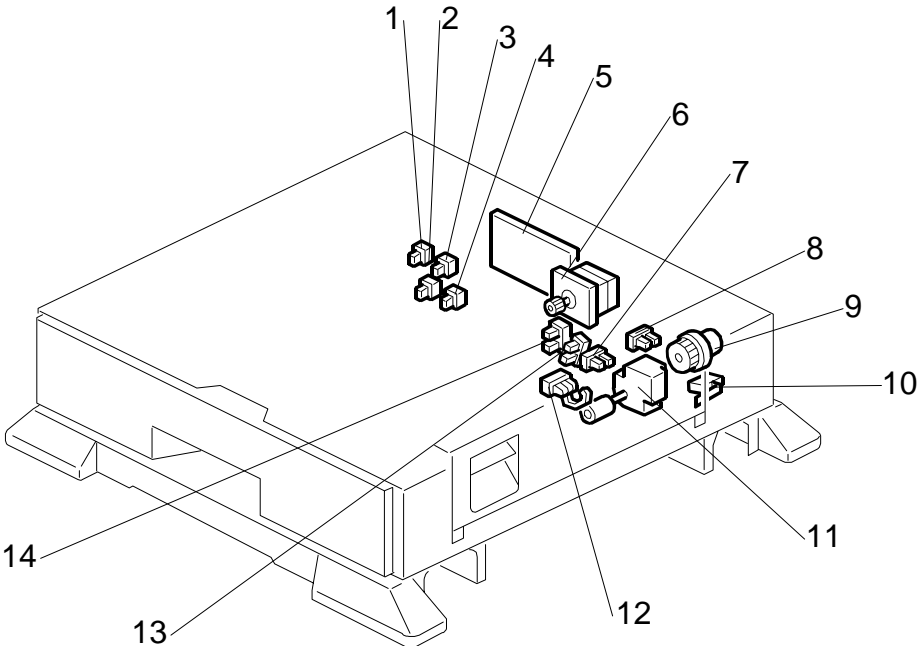
1. Paper Feed Motor
2. Paper Feed Clutch
3. Paper Feed Roller
4. Separation Roller
5. Pick-up Roller

POINT TO POINT WIRING DIAGRAM (One-tray Paper Feed Unit: G567)

Symbol Table



ELECTRICAL COMPONENT LAYOUT (G567)



G567D101.WMF

ELECTRICAL COMPONENT DESCRIPTION (G567)

Symbol	Description	Index No.	P-to-P
Motors			
M1	Paper Feed	6	G2
M2	Tray Lift	11	B4
Sensors			
S1	Lift	8	G3
S2	Relay	12	G3
S3	Paper End	7	G4
S4	Paper Height 1	14	G5
S5	Paper Height 2	13	G5
Switches			
SW1	Paper Size 1	1	G4
SW2	Paper Size 2	2	G4
SW3	Paper Size 3	3	G5
SW4	Paper Size 4	4	G5
SW5	Vertical Guide	10	B5
Magnetic Clutches			
MC1	Paper Feed	9	B4
PCBs			
PCB1	Main	5	D6
Heaters			
H1	Tray Heater (Option)	-	C2